



High Performance Solutions from High Performing People

Committed to delivering safe, reliable and efficient vehicles built in the United States

usa.siemens.com/mobility

Siemens is at the forefront of sustainable technology and green manufacturing.

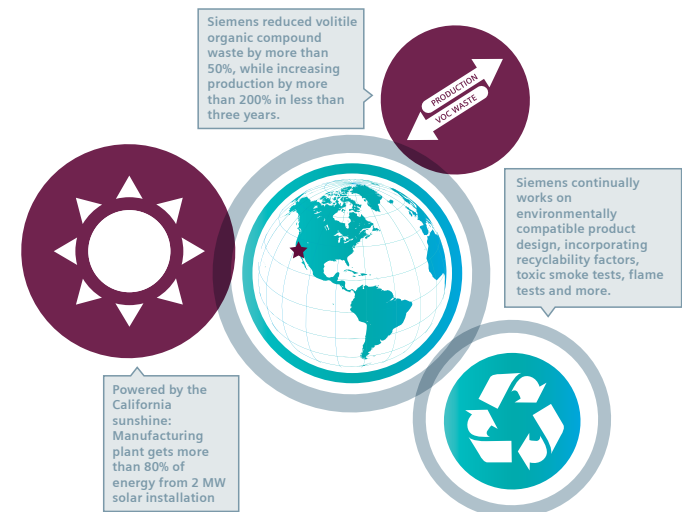
Siemens' Sacramento, California rail manufacturing plant is a leader in providing rolling stock and related services. Its portfolio covers the full range of vehicles – from light rail vehicles and streetcars, to locomotives and coaches, all built right here in the United States at a manufacturing plant powered almost entirely by a 2 MW solar installation.

Siemens has expertise in the areas of urban, commuter and long-distance transport to offer environmentally friendly, efficient and reliable rail vehicles. The company's Sacramento plant builds rolling stock from start to finish: design,

engineering, carshells, wheel-sets, sub-assembly, final assembly and testing.

Currently, more than 1000 people are employed at the 583,000-square-foot facility, on 60 acres of land. As the operation in Sacramento continues to grow, Siemens has the flexibility to produce a wider array of products to respond to America's rail renaissance.

With its comprehensive portfolio of vehicles, services and solutions built in the United States, Siemens is providing the solutions to keep America moving forward.



Siemens has continually expanded the localization of its U.S. rolling stock manufacturing since 1980

1980

- 1980:** First U.S. order of light rail vehicles for San Diego
- 1983:** First local U.S. vehicle assembly for Buy America begins in Pittsburgh, Penn.
- 1984:** First Siemens local assembly established in Sacramento, Calif.

1990

- 1992-1995:** Siemens established permanent light rail facility in Sacramento for engineering, sub-assembly, vehicle assembly, and office space

2000

- 2006:** Expansion and in-sourcing of carshell manufacturing in Sacramento
- 2007:** Established first satellite vehicle assembly operation – Elmira, NY
- 2008:** Bogie and truck-frame manufacturing began at the Sacramento plant – completing the final aspect of complete vertical integration
- 2009:** Sacramento plant began operating mostly on solar power

2010

- 2010:** Purchased 22 acres adjacent to the plant for further expansion – envisioned to become high-speed rail center of excellence
- 2012:** Locomotive manufacturing upgrades completed at the Sacramento plant
- 2014:** Building expansion to increase capacity for welding and carshell manufacturing
- 2015:** Begin passenger coach and diesel-electric locomotive manufacturing in newly constructed buildings, expanding operations to 60 acres.

More than 30 years,
more than 2000 vehicles rolling out the door

Light Rail / Streetcar



The market leader – 17 cities in the U.S. and Canada have ordered more than 1800 Siemens light rail and streetcar vehicles; one out of every three light rail vehicles in North America is a Siemens vehicle.

Locomotives



New electric and diesel-electric locomotives for the U.S. will power efficient, reliable and sustainable passenger rail service across the country.

Coaches



In the U.S. Siemens is manufacturing coaches for Brightline which will connect Orlando to Miami in 2017.

High-Speed Trainsets



The successful Velaro is currently operating in nine countries worldwide.

Published by Siemens Industry, Inc. 2017

Mobility Division
498 7th Avenue • 16th Floor
New York, NY 10018
United States

Contact for information:
Rolling Stock Business Unit
7464 French Rd
Sacramento, CA 95828
(916) 681-3000
mobility.communications.ic@siemens.com

Printed in the USA on 50% Recycled Paper
Subject to changes and errors. The information given in this document only contains general descriptions and/or performance features which may not always specifically reflect those described, or which may undergo modification in the course of further development of the products. The requested performance features are binding only when they are expressly agreed upon in the concluded contract.